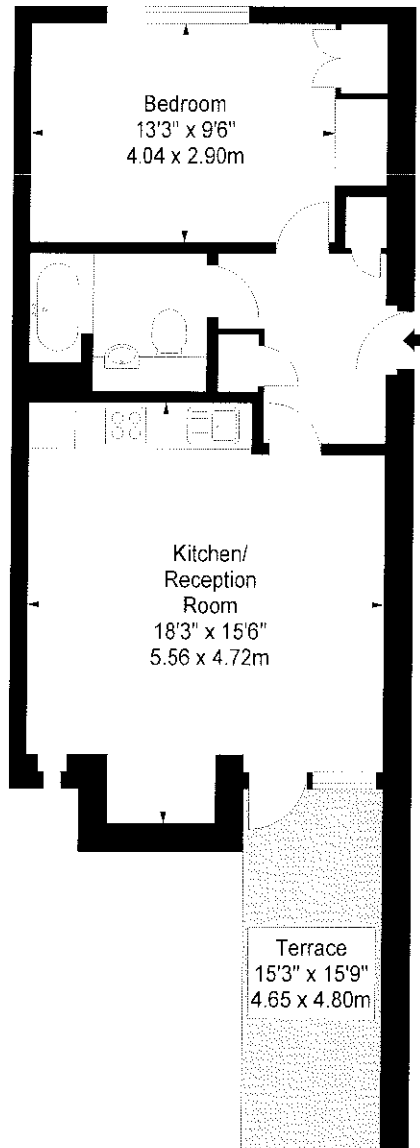


**Flat 18,
Annex Building ,
Kew Bridge Court, W4**
Approx. Gross Internal Area *
513 Ft² - 47.66 M²



Third Floor

Illustration For Identification Purposes Only. Not to Scale

* As Defined by RICS - Code of Measuring Practice

BKR
FLOOR PLANS

(OFFICES THROUGHOUT THE UK)

T: 0846 267 2023
WWW.BKRFLOORPLANS.CO.UK
2007